

****COLORS SHOWN ARE NOT EXACT DUE TO SCANNING VARIATIONS**



ASC01 VINTAGE TWEED IRISH LINEN
F-V300



ASC06 SILVER BRONCO
F-B113S



ASC05 VINTAGE PALOMINO BRONCO
F-V100



ASC08 BLACK NUBTEX
F-N160

****COLORS SHOWN ARE NOT EXACT DUE TO SCANNING VARIATIONS**



ASC09 VANILLA NUBTEX
F-N140



ASC11 SAND NUBTEX
F-N130



ASC10 PALOMINO NUBTEX
F-N155

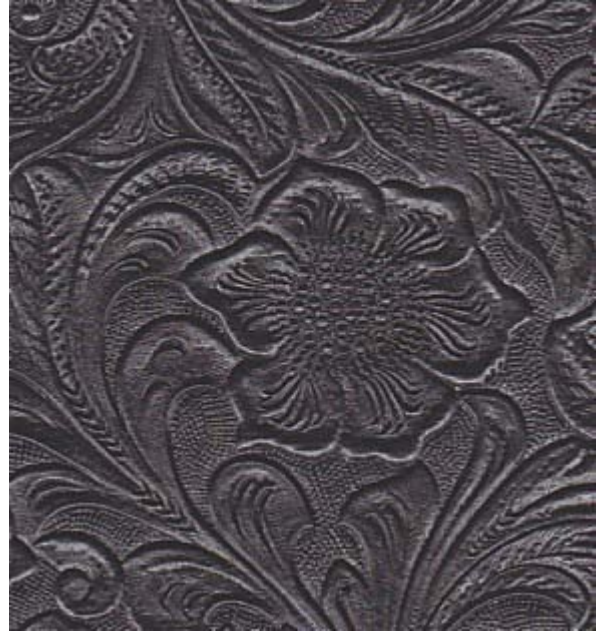


ASC17 BRUNO MARVELON
F-OX10

****COLORS SHOWN ARE NOT EXACT DUE TO SCANNING VARIATIONS**



ASC18 BLACK MARVELON
F-OX20



ASC22 BLACK WESTERN
F-W800



ASC19 BLACK COUGAR
F-COUG1

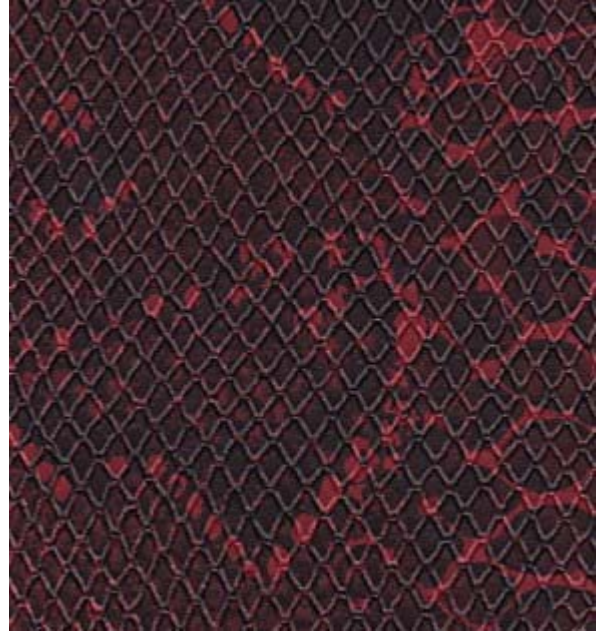


ASC31N RED NUBTEX KNIT
F-N190

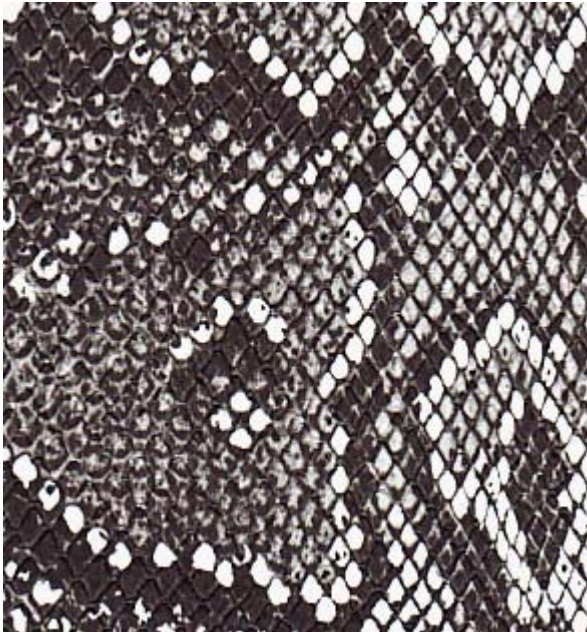
****COLORS SHOWN ARE NOT EXACT DUE TO SCANNING VARIATIONS**



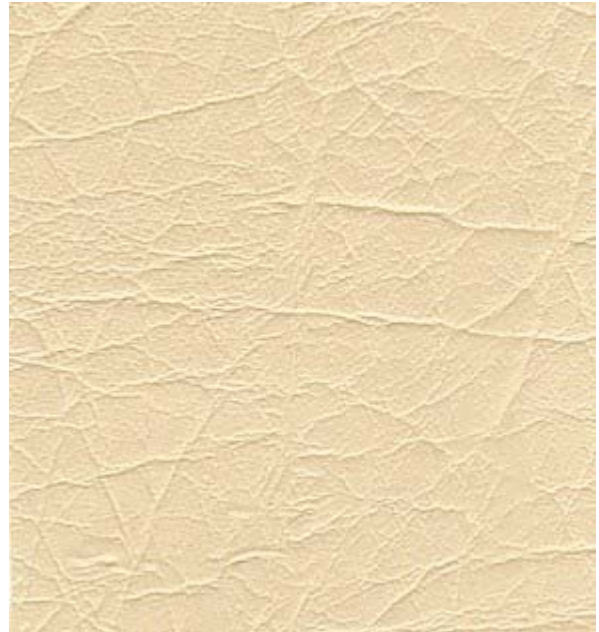
ASC32L HOT SCARLET RED BRONCO
F-B116T



ASC35 BURGUNDY PYTHON SNAKESKIN
F-SN100



ASC34 INDIGO PYTHON SNAKESKIN
F-SN100



ASC36 VINTAGE VANILLA TAURUS
F-TV02

****COLORS SHOWN ARE NOT EXACT DUE TO SCANNING VARIATIONS**



ASC37 WINE BUGGY WHIP TAURUS
F-T122



ASC39 GREY BUGGY WHIP TAURUS
F-T121

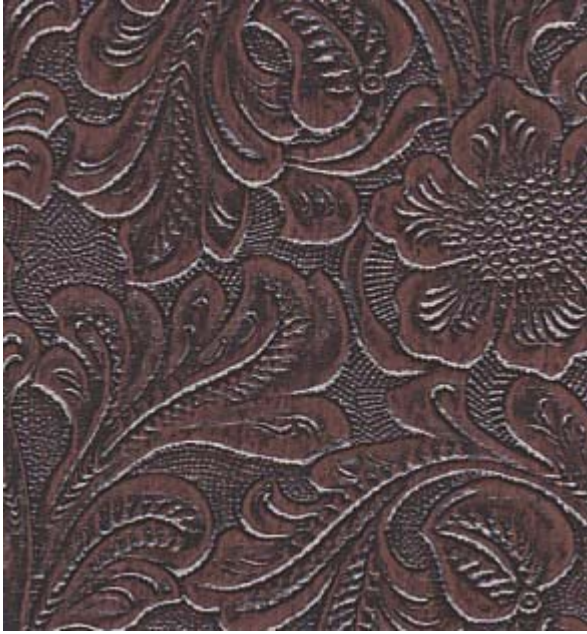


ASC38 HUNTER GREEN BUGGY WHIP
TAURUS
F-T903



ASC40 WHITE JUNGLE BARK/ELEPHANT
F-JB40

****COLORS SHOWN ARE NOT EXACT DUE TO SCANNING VARIATIONS**



ASC41 COUNTRY WESTERN
F-W810



ASC44 BLACK JUNGLE BARK/ELEPHANT
F-JB30

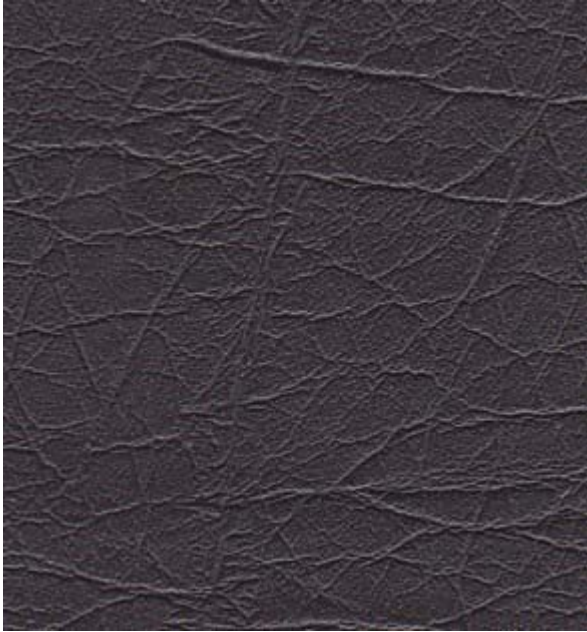


ASC43 PURPLE JUNGLE BARK/ELEPHANT
F-JB20



ASC45 RED JUNGLE BARK/ELEPHANT
F-JB10

****COLORS SHOWN ARE NOT EXACT DUE TO SCANNING VARIATIONS**



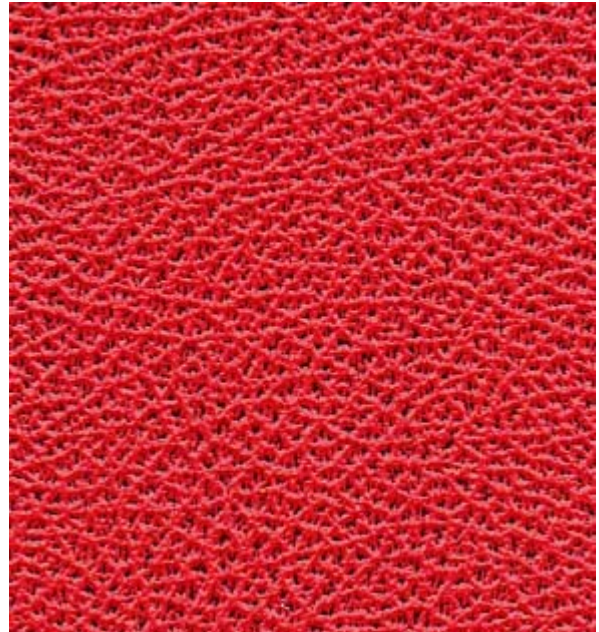
**BLACK TAURUS
VARIOUS WEIGHTS & CONSTRUCTION**



**ASC51 BRITISH PLUM BRONCO
F-B110P**

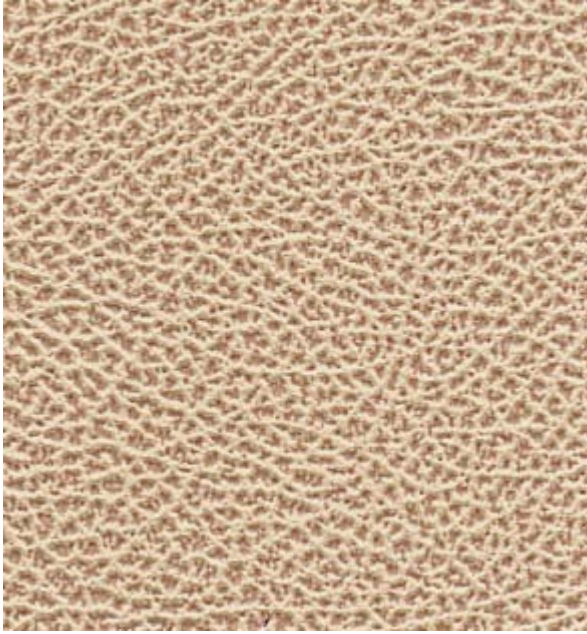


**ASC47 BRITISH EMERALD BRONCO
F-B110A**



**ASC52 BRITISH GARNET BRONCO
F-B110G**

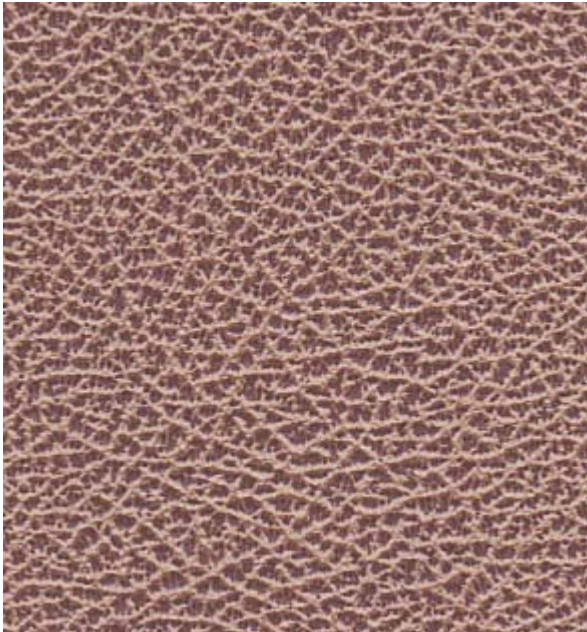
****COLORS SHOWN ARE NOT EXACT DUE TO SCANNING VARIATIONS**



ASC53 BRITISH TAN BRONCO
F-B119



ASC55 BLACK PUMA
F-PUMA3

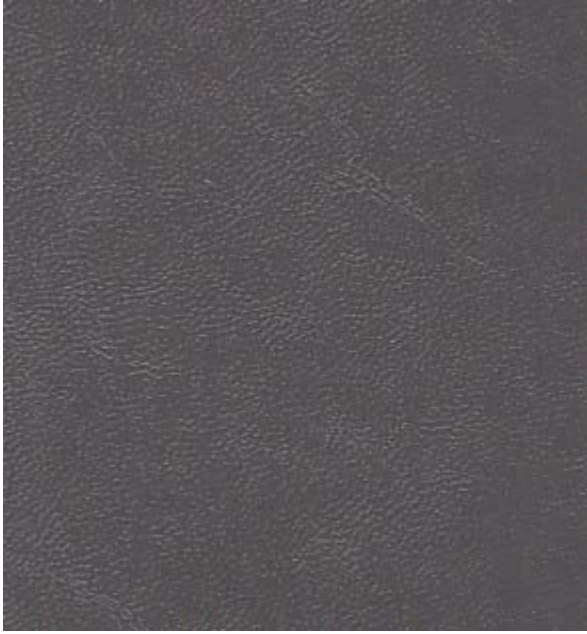


ASC54 BRITISH COCOA BRONCO
F-B110B



ASC59 ORANGE NUBTEX
F-N180

****COLORS SHOWN ARE NOT EXACT DUE TO SCANNING VARIATIONS**



ASC61 BLACK BOLERO
K-15135 (ALSO IN WHITE K-15286)



ASC68T IVORY TACO
F-T118



ASC68 IVORY BRONCO
F-B118

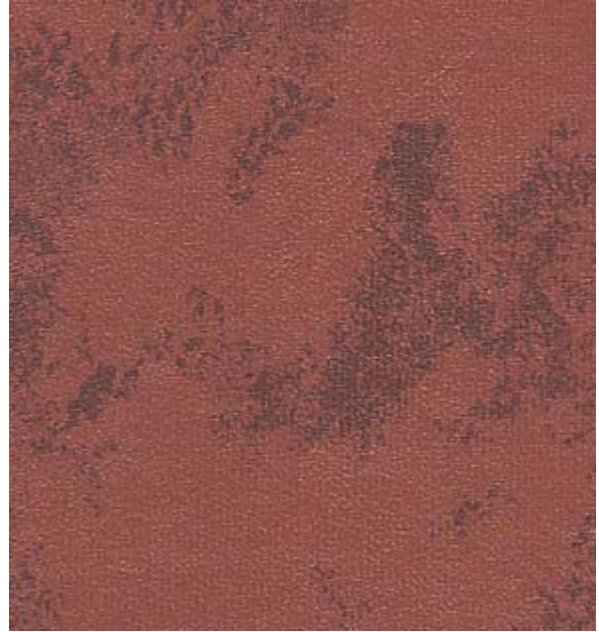


ASC70 APPLE BRONCO
F-B300G

****COLORS SHOWN ARE NOT EXACT DUE TO SCANNING VARIATIONS**



**ASC74 MOCHA BROWN OXEN
F-SB01**



ASC78 CLOPLAY CLOUD /PALOMAR



**ASC75 BLACK TACO
F-TAC25**



**ASC79 SAND BRONCO
F-B130**

****COLORS SHOWN ARE NOT EXACT DUE TO SCANNING VARIATIONS**



ASC80 BLACK COUGAR
F-COUG5



ASC85 BLACK BURLAP
F-BURL



ASC82H BLACK BASKETWEAVE
F-BASKT



ASC86 CAMO DANDY CLOUD/PALOMAR
F-CAMO1

****COLORS SHOWN ARE NOT EXACT DUE TO SCANNING VARIATIONS**



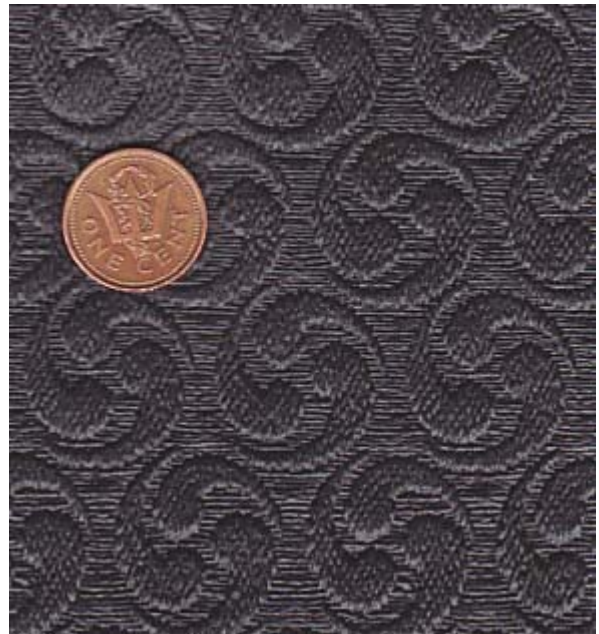
ASC88 BLACK KRINKLE
F-KRNKL



ASC95 CANDY GREEN BRONCO
F-B305



ASC90 YELLOW BRONCO
F-BLY04



ASC96 BLACK COMET
F-COBLK

****COLORS SHOWN ARE NOT EXACT DUE TO SCANNING VARIATIONS**



ASC99 BLACK PANAMA
F-PAN1



ASC92 RED PANAMA
F-PANR

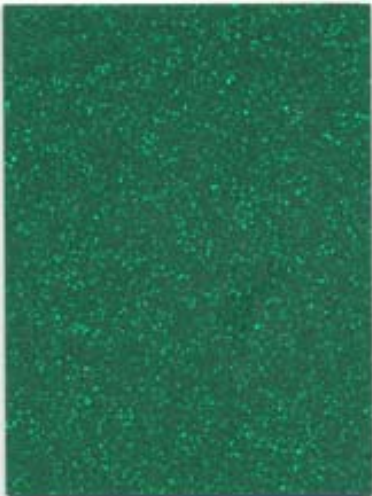


ASC91 WHITE PANAMA
F-PANW

****COLORS SHOWN ARE NOT EXACT DUE TO SCANNING VARIATIONS**



ZD 77 Hot Pink



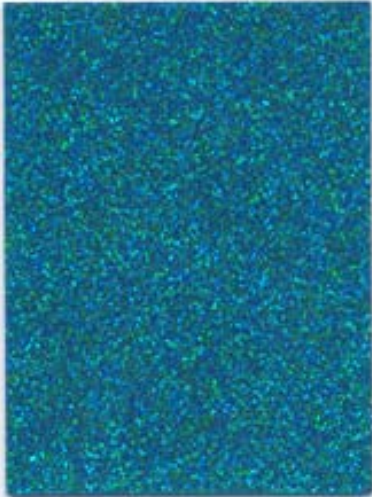
ZD 23 Green



ZD 26 Silver



ZD 78 Fuschia



ZD 20 Cascade



ZD 22 Gold



ZD 24 Burgundy



ZD 21 Blue



ZD 27 Charcoal